



# Planning Committee A

To be held on 16<sup>th</sup> May 2024

# 23/00823/FULM - Pavers Ltd, Catherine House, Northminster Business Park, Harwood Road, Upper Poppleton, York

Extension to provide storage, integrated distribution and logistics centre (B8 Use) with ancillary office/welfare space, service yard, parking areas, and landscaping (resubmission)

Site viewed from  
South East (Image  
from Submitted  
LVIA)



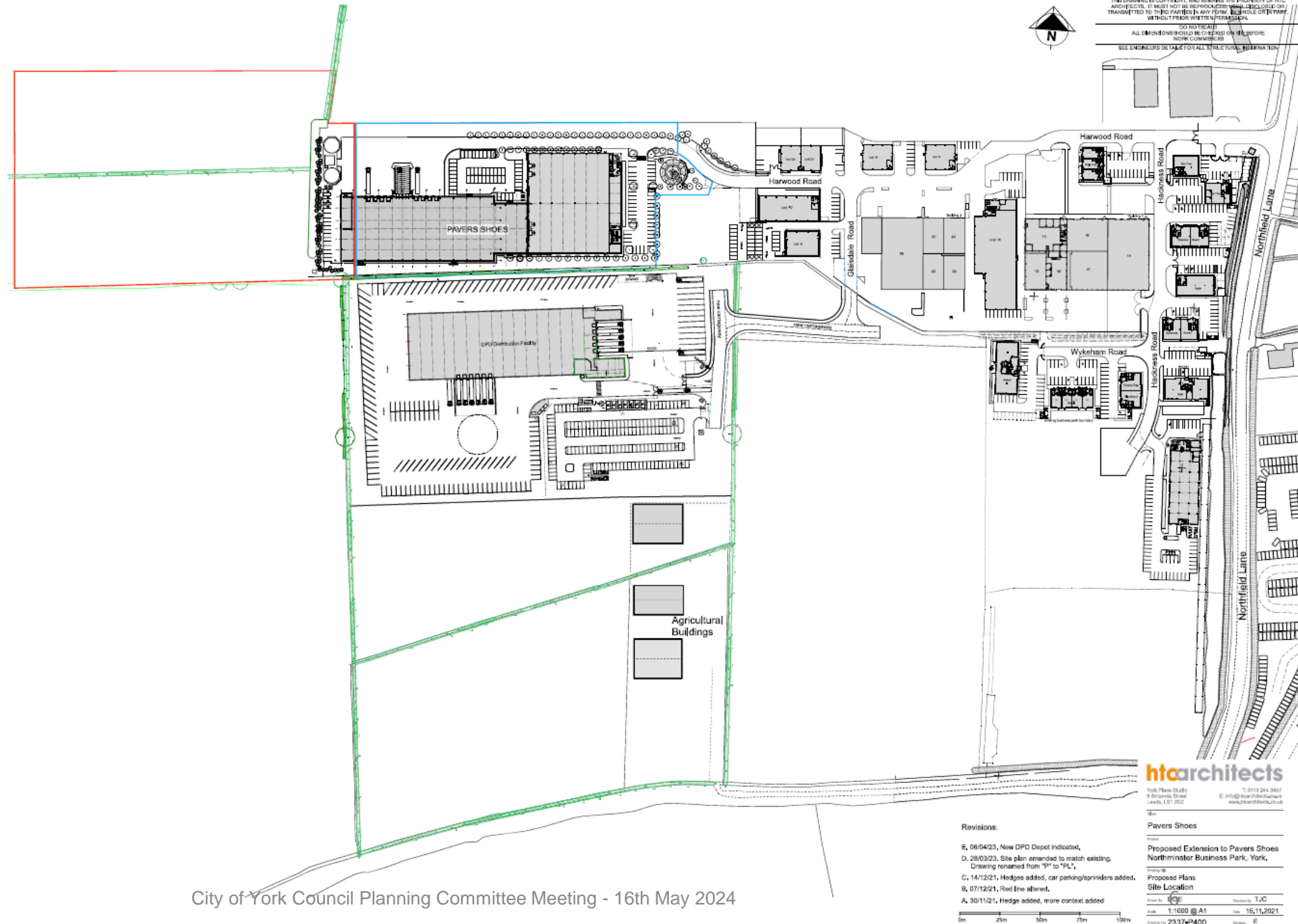
View toward  
application site  
from existing car  
park (Image from  
submitted LVIA)



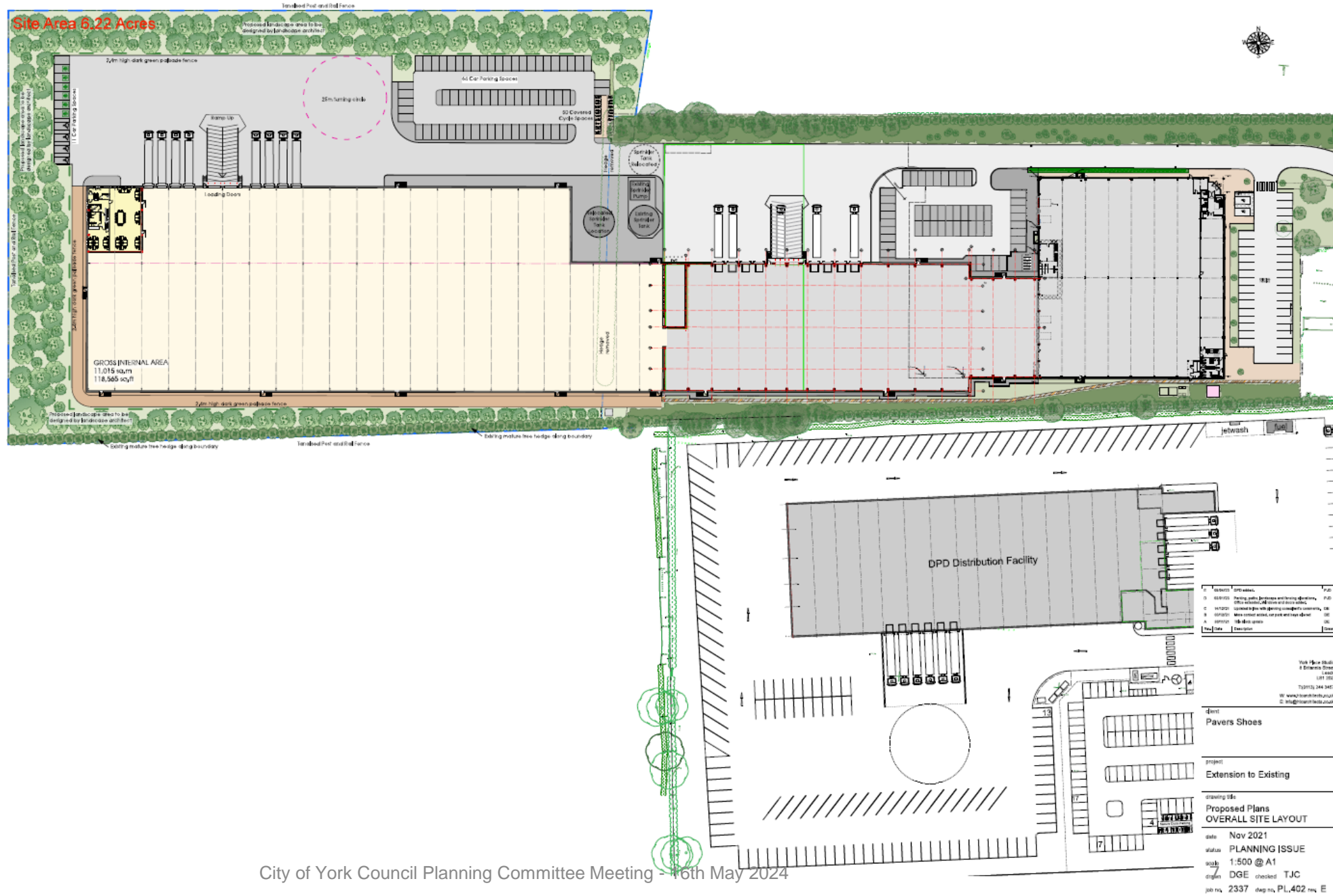


View from Southwest across application site toward existing site (Image from submitted LVIA)

# Site Location Plan



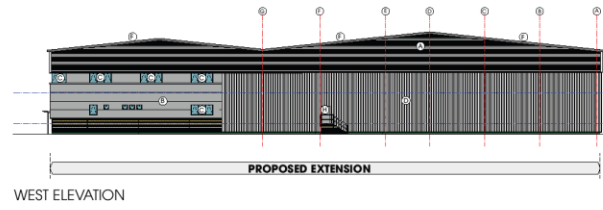
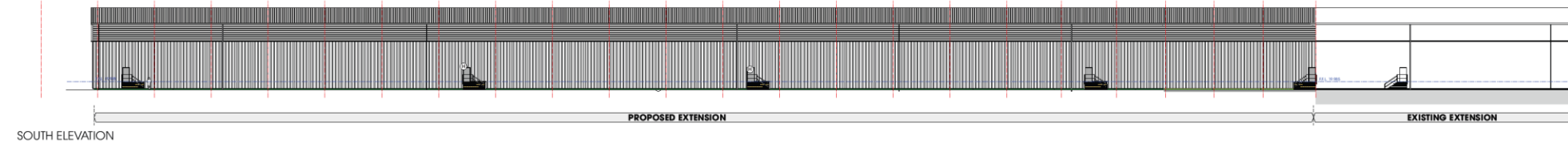
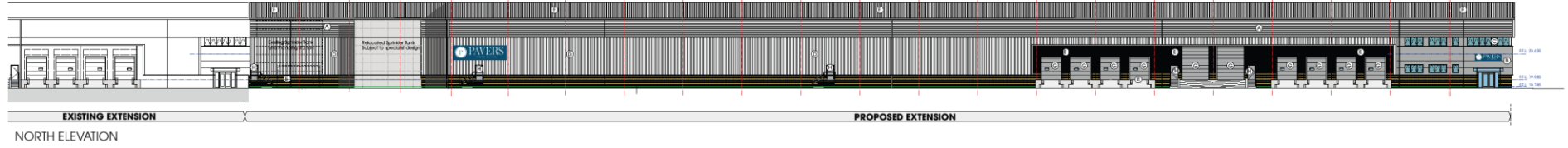
# Proposed Site Layout



# Proposed Elevations

1:200

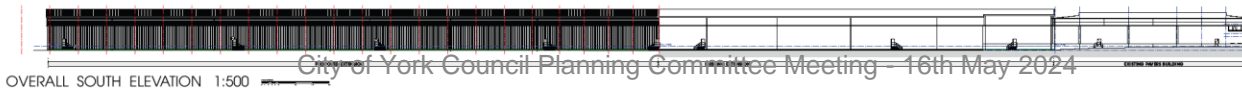
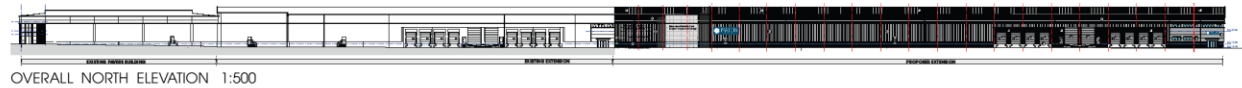
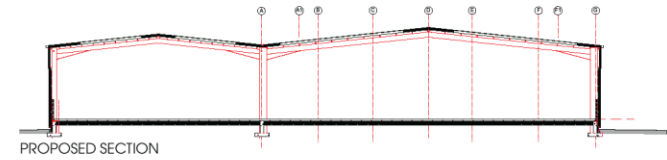
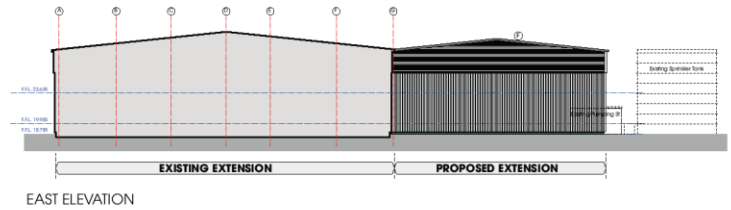
Information is provided for general information only. It is not intended to be used for any other purpose. It is provided on the basis that the user will verify the accuracy of the information and is not responsible for any errors or omissions. All dimensions are in millimeters unless otherwise stated.



**LEGEND**

1	Factory painted profiled metal wall cladding (vertical)	27.10-27.15
2	Kingston APH 1000MS (or similar) composite insulated metal roof (1000mm x 2000mm) with 100mm EPS foam, 50mm insulation	Absolutes SS 18-6-17
3	Polystyrene powder coated aluminium window	Dark Grey RAL 7012 SS 18-6-17
4	Factory painted profiled metal wall cladding (vertical)	Absolutes SS 18-6-17
5	Rail Road Intersun	Buff Brick
6	Terra Rappings and Facade	Dark Grey RAL 7012 SS 18-6-17
7	Loading Dock	Absolutes SS 18-6-17
8	Polystyrene powder coated steel security doorset	Dark Grey RAL 7012 SS 18-6-17
9	Factory painted profiled metal roof cladding	Absolutes SS 18-6-17

Note: colour 'hammer' refer to RFI200 material as manufactured by Tolo Steel. Some colours are available from other manufacturers under different names.



City of York Council Planning Committee Meeting - 16th May 2024

The Place Studio  
 18 Riverside Court  
 L17 2JZ  
 01753 666 667  
 H: www.htarchitects.co.uk  
 E: info@htarchitects.co.uk

client  
 Pavers Shoes

project  
 Extension to Existing

drawing title  
 Proposed Elevations & Section

date  
 Nov 2021

status  
 Planning

scale  
 1:200 / 1:500 @ A0

drawn  
 DGE checked TJC

job no.  
 2337 dsg no PL\_200 rev C